

**EATON PLACE
BELGRAVIA, LONDON SW1X**



Immaculately presented apartment on the third floor of a stucco fronted period conversion located in this most prestigious of Belgravia streets.
The apartment offers a corner aspect facing South and West making it incredibly light from all rooms and is ideally situated for all the world renowned shopping and amenities of Sloane Street and Knightsbridge.

RECEPTION ROOM
KITCHEN
2 BEDROOMS
2 BATHROOMS
CLOAK ROOM
PORTER
ENTRANCE HALL
LIFT

£1,550 PER WEEK



Misrepresentation Act 1967

The information in this publication should be referred solely as a general guide. Whilst care has been taken in its preparation, no representation is made nor responsibility accepted for the whole or any part. All descriptions, dimensions, reference to condition and other details are believed to be correct but intending purchasers should satisfy themselves by inspection or otherwise as to the correctness of each of them.

REF: 049053049054-1714813600-c4aceec77e0063047b654ea0f1800b84 [2024-05-04 10:07:11] P1



Eaton Place, SW1

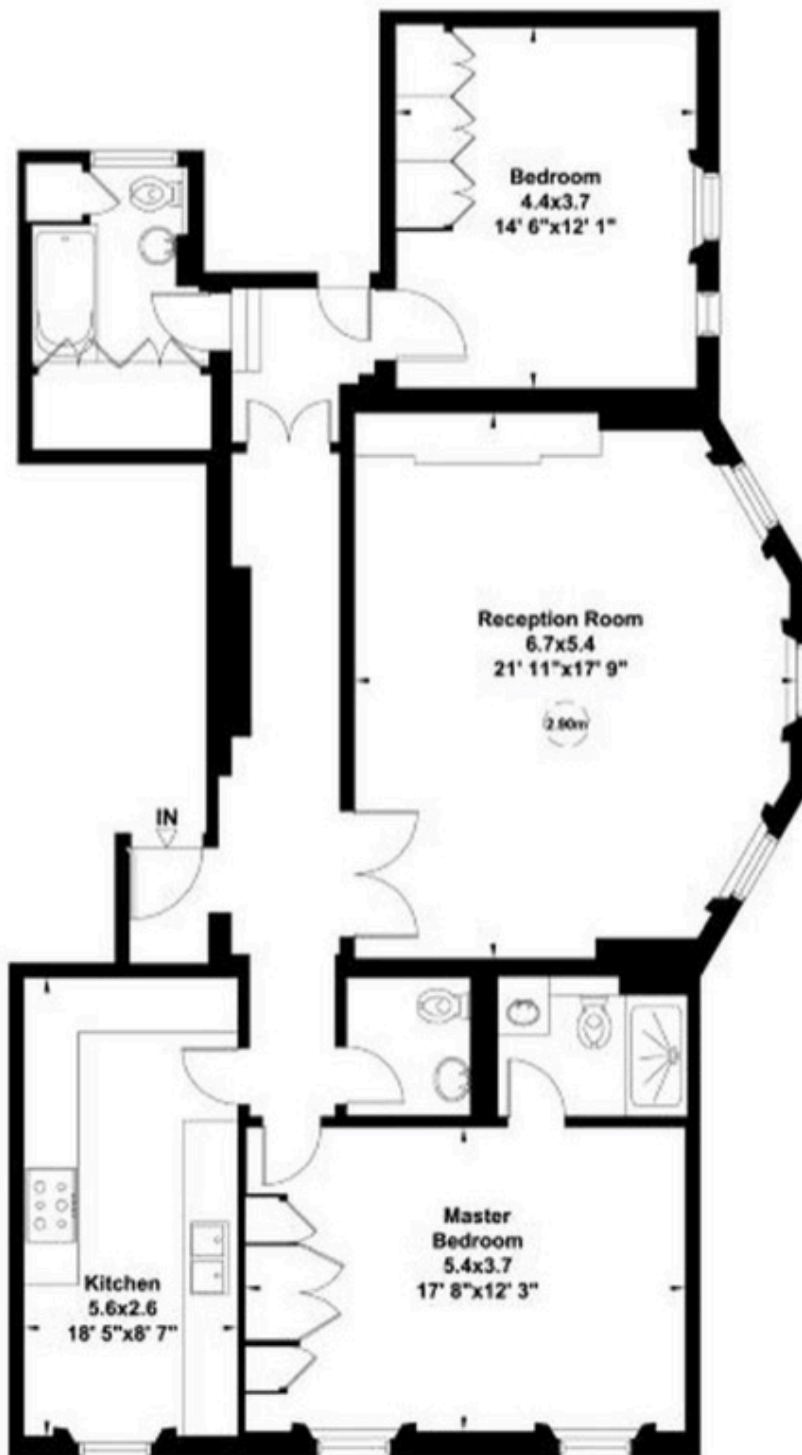
Gross internal area (approx.)

120 Sq m (1295 Sq ft)

For identification only, Not to Scale



Floor Plan by **capitalgroup** 020 8671 7722



Third Floor

Misrepresentation Act 1967

The information in this publication should be referred solely as a general guide. Whilst care has been taken in its preparation, no representation is made nor responsibility accepted for the whole or any part. All descriptions, dimensions, reference to condition and other details are believed to be correct but intending purchasers should satisfy themselves by inspection or otherwise as to the correctness of each of them.

REF: 049053049054-1714813600-c4aceec77e0063047b654ea0f1800b84 [2024-05-04 10:07:11] P2



RENTAL TERMS

PRICE: £1,550 PER WEEK

Misrepresentation Act 1967

The information in this publication should be referred solely as a general guide. Whilst care has been taken in its preparation, no representation is made nor responsibility accepted for the whole or any part. All descriptions, dimensions, reference to condition and other details are believed to be correct but intending purchasers should satisfy themselves by inspection or otherwise as to the correctness of each of them.

REF: 049053049054-1714813600-c4aceec77e0063047b654ea0f1800b84 [2024-05-04 10:07:11] P3

