

**OAKWOOD COURT
HOLLAND PARK, LONDON W14**



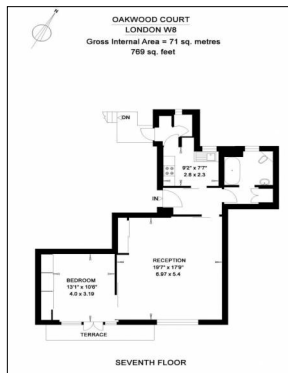
A beautifully presented and spacious one bedroom PENTHOUSE apartment (769 sq ft) situated on the 7th floor (with lift) of a much sought after mansion block.

The flat is well laid out and benefits from having a large South facing balcony and fantastic views.

Oakwood Court is located moments from the open spaces of Holland Park and has Kensington High Street close by with its many excellent shops, restaurants and transport facilities.

RECEPTION ROOM
KITCHEN
BEDROOM
BATHROOM
PURPOSE BUILT
24 HOUR PORTER
ENTRANCE HALL
LIFT
WOODEN FLOORS
COMMUNAL GARDEN
TERRACE

£895,000 SUBJECT TO CONTRACT



Misrepresentation Act 1967

The information in this publication should be referred solely as a general guide. Whilst care has been taken in its preparation, no representation is made nor responsibility accepted for the whole or any part. All descriptions, dimensions, reference to condition and other details are believed to be correct but intending purchasers should satisfy themselves by inspection or otherwise as to the correctness of each of them.

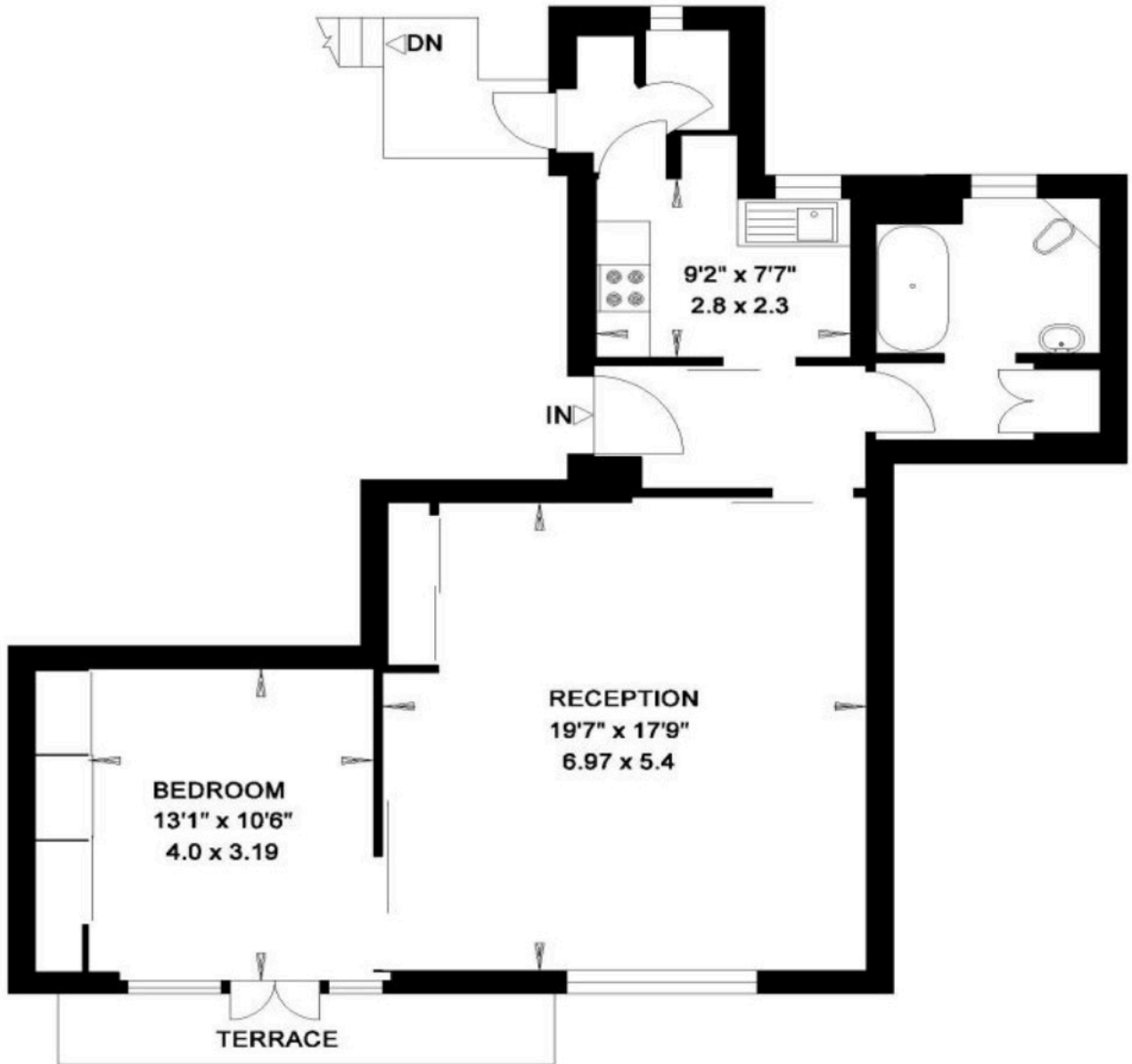
REF: 049053050057-1710410407-2cccbe11fe66a394a9aad7aed6003226 [2024-03-14 10:01:16] P1





**OAKWOOD COURT
LONDON W8**

**Gross Internal Area = 71 sq. metres
769 sq. feet**



SEVENTH FLOOR

Misrepresentation Act 1967

The information in this publication should be referred solely as a general guide. Whilst care has been taken in its preparation, no representation is made nor responsibility accepted for the whole or any part. All descriptions, dimensions, reference to condition and other details are believed to be correct but intending purchasers should satisfy themselves by inspection or otherwise as to the correctness of each of them.

REF: 049053050057-1710410407-2cccbe11fe66a394a9aad7aed6003226 [2024-03-14 10:01:16] P2



Sales Terms

Tenure: Leasehold

Lease Length: 971 years

Price: £895,000 Subject to Contract

Service Charge: £4,000 per annum

Ground Rent: £50 per annum

Misrepresentation Act 1967

The information in this publication should be referred solely as a general guide. Whilst care has been taken in its preparation, no representation is made nor responsibility accepted for the whole or any part. All descriptions, dimensions, reference to condition and other details are believed to be correct but intending purchasers should satisfy themselves by inspection or otherwise as to the correctness of each of them.

REF: 049053050057-1710410407-2cccbe11fe66a394a9aad7aed6003226 [2024-03-14 10:01:16] P3

