

**EATON PLACE
BELGRAVIA, LONDON SW1X**



A stunning FIRST floor one bedroom apartment (1,198 sqft) with an amazing South and Westerly facing double aspect.

Located in one of the most prestigious Belgravia addresses, the flat benefits from high ceilings throughout as well as TWO terraces and a long lease.

RECEPTION ROOM
KITCHEN
BEDROOM
BATHROOM
CLOAK ROOM
RECENTLY REFURBISHED
PORTER
ENTRANCE HALL
LIFT
WOODEN FLOORS
PRIVATE TERRACE

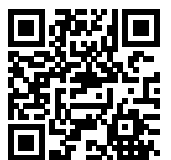
£1,600 PER WEEK



Misrepresentation Act 1967

The information in this publication should be referred solely as a general guide. Whilst care has been taken in its preparation, no representation is made nor responsibility accepted for the whole or any part. All descriptions, dimensions, reference to condition and other details are believed to be correct but intending purchasers should satisfy themselves by inspection or otherwise as to the correctness of each of them.

REF: 049053049057-1713790299-2993d4240cd8b3f9bc662940b8120cf7 [2024-04-25 14:08:54] P1



Eaton Place, SW1

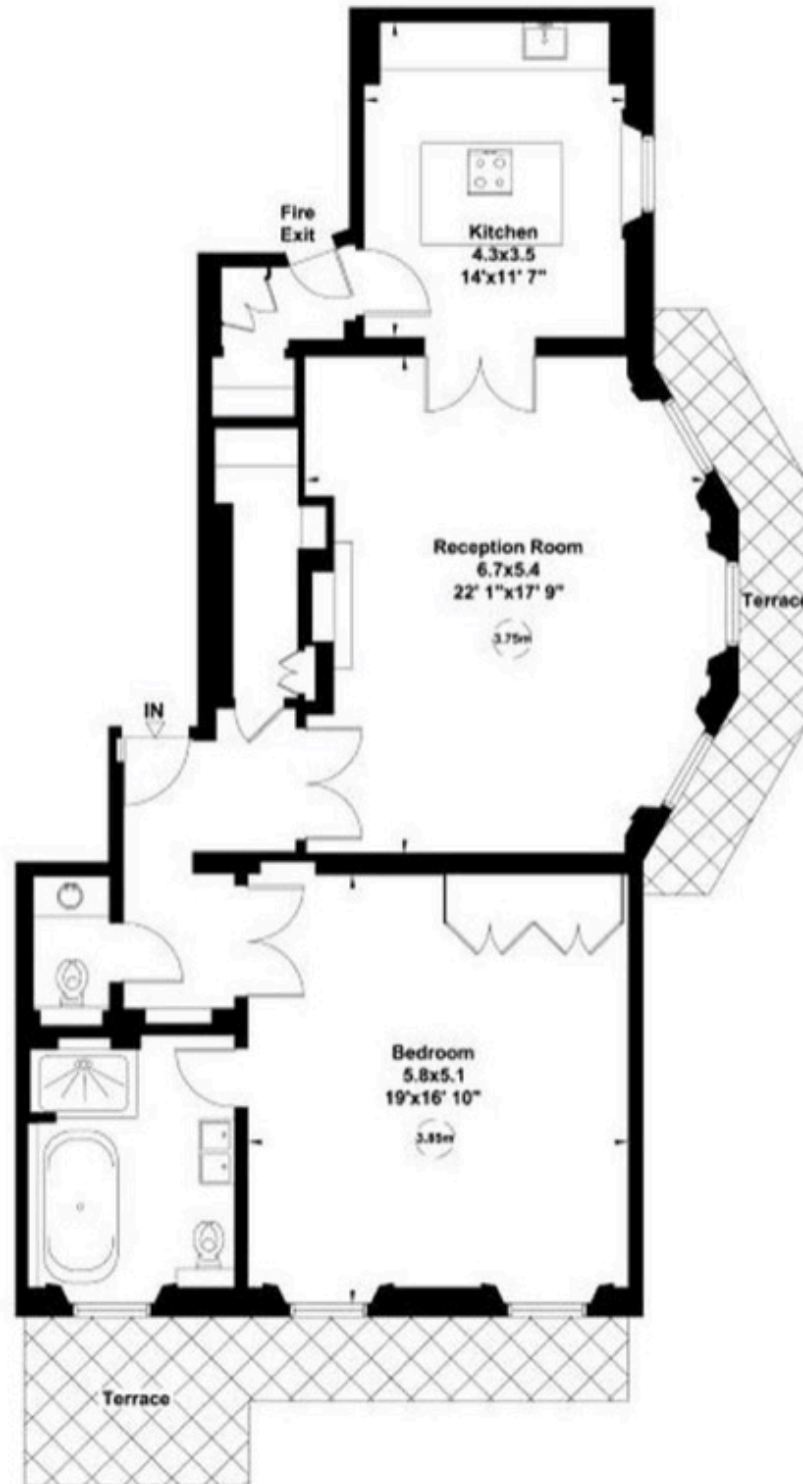
Gross internal area (approx.)

111 Sq m (1198 Sq ft)

For identification only, Not to Scale



Floor Plan by **capital group** 020 8671 7722



First Floor

Misrepresentation Act 1967

The information in this publication should be referred solely as a general guide. Whilst care has been taken in its preparation, no representation is made nor responsibility accepted for the whole or any part. All descriptions, dimensions, reference to condition and other details are believed to be correct but intending purchasers should satisfy themselves by inspection or otherwise as to the correctness of each of them.

REF: 049053049057-1713790299-2993d4240cd8b3f9bc662940b8120cf7 [2024-04-25 14:08:54] P2



RENTAL TERMS

PRICE: £1,600 PER WEEK

Misrepresentation Act 1967

The information in this publication should be referred solely as a general guide. Whilst care has been taken in its preparation, no representation is made nor responsibility accepted for the whole or any part. All descriptions, dimensions, reference to condition and other details are believed to be correct but intending purchasers should satisfy themselves by inspection or otherwise as to the correctness of each of them.

REF: 049053049057-1713790299-2993d4240cd8b3f9bc662940b8120cf7 [2024-04-25 14:08:54] P3

